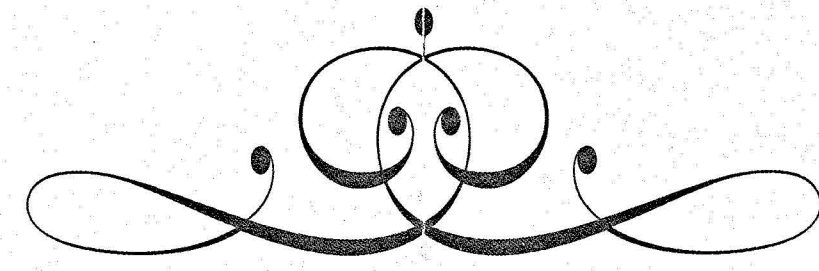


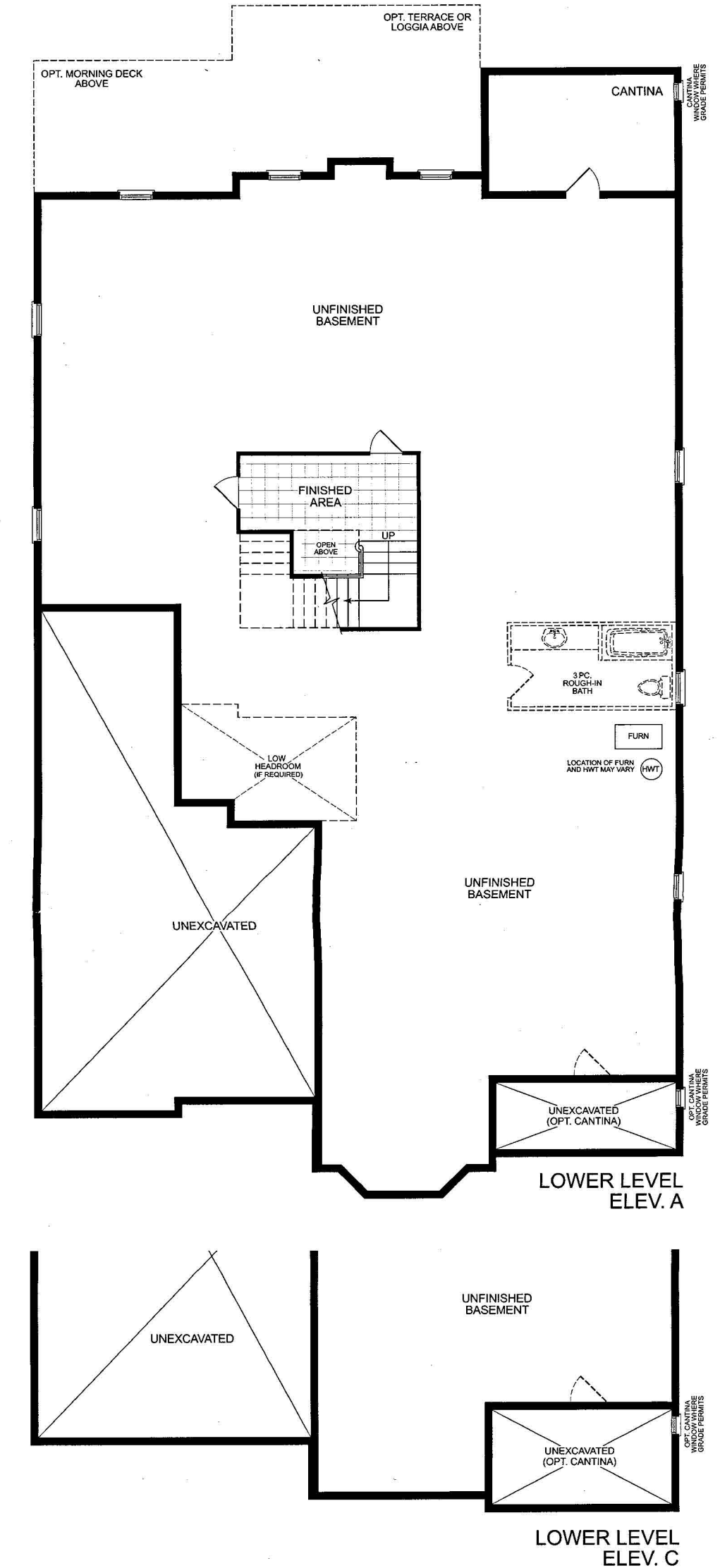
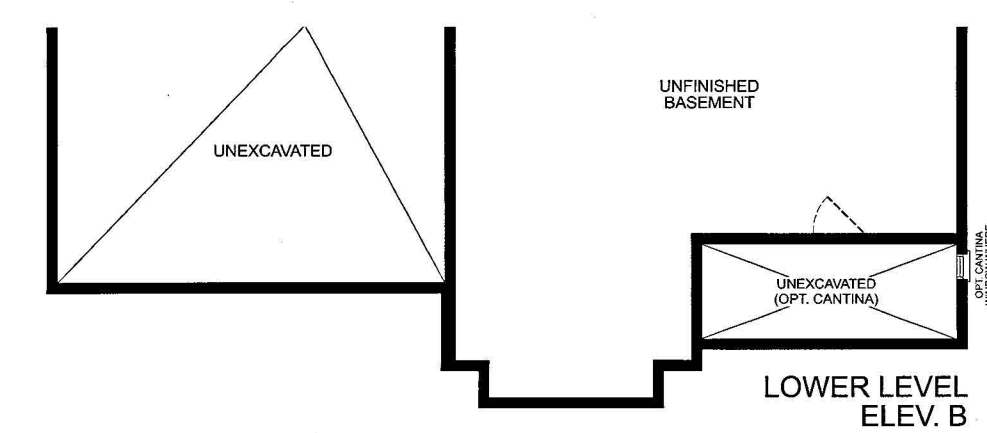
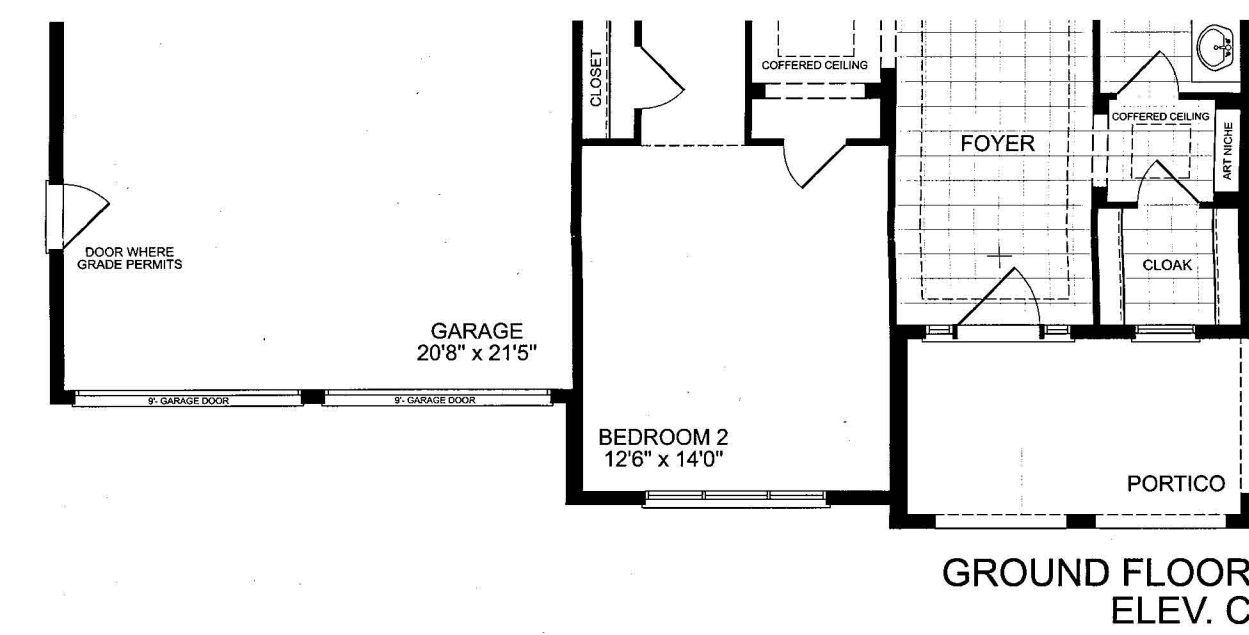
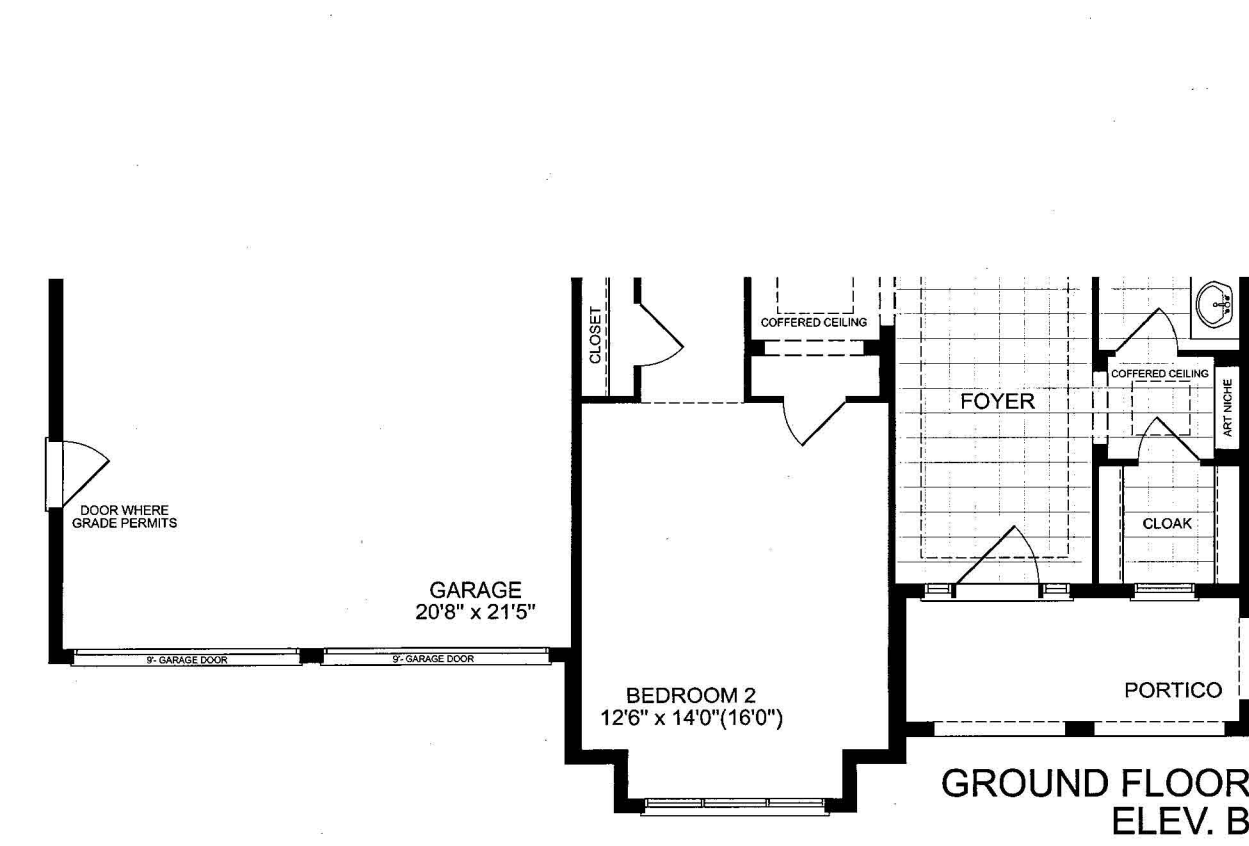
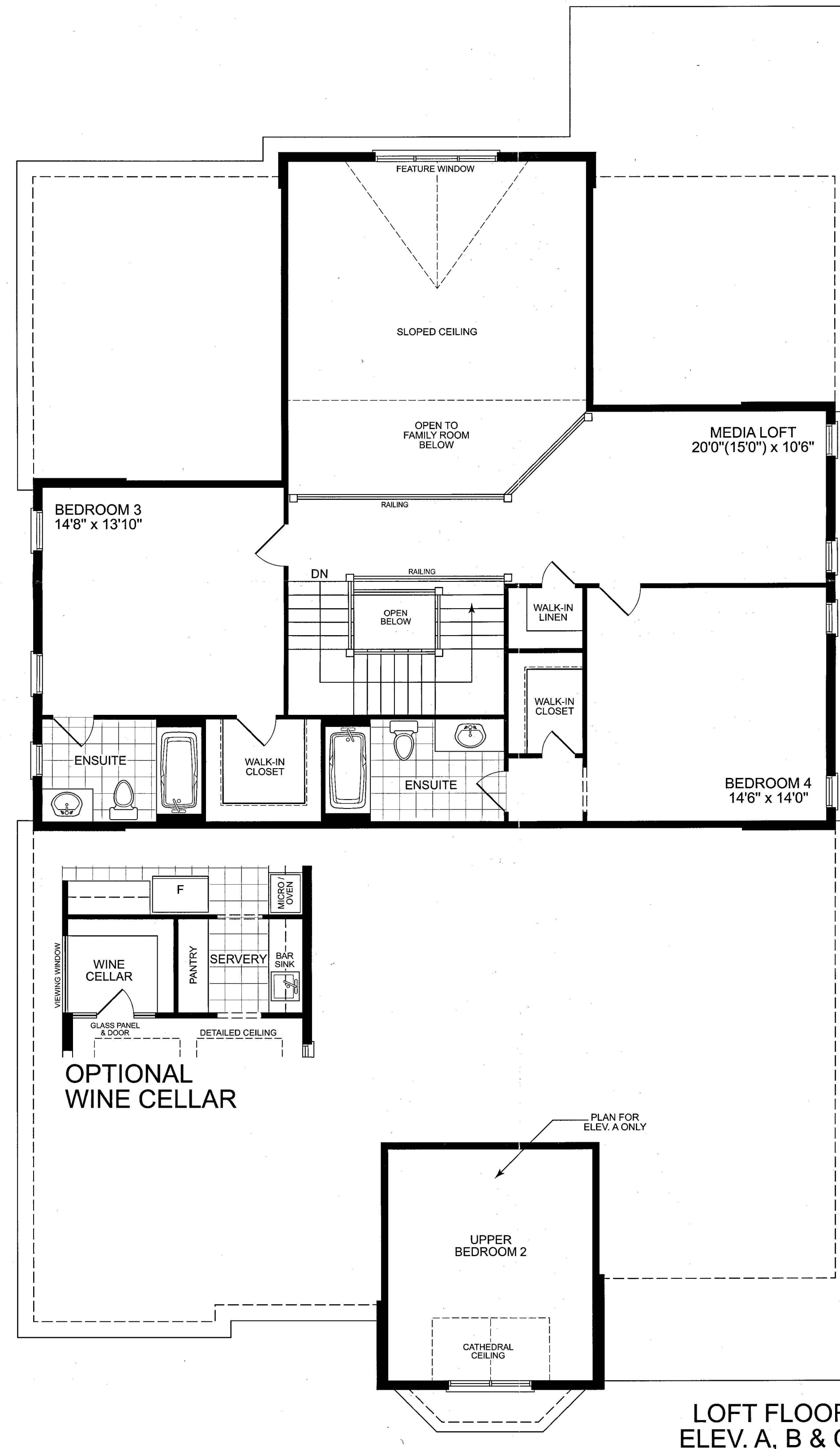
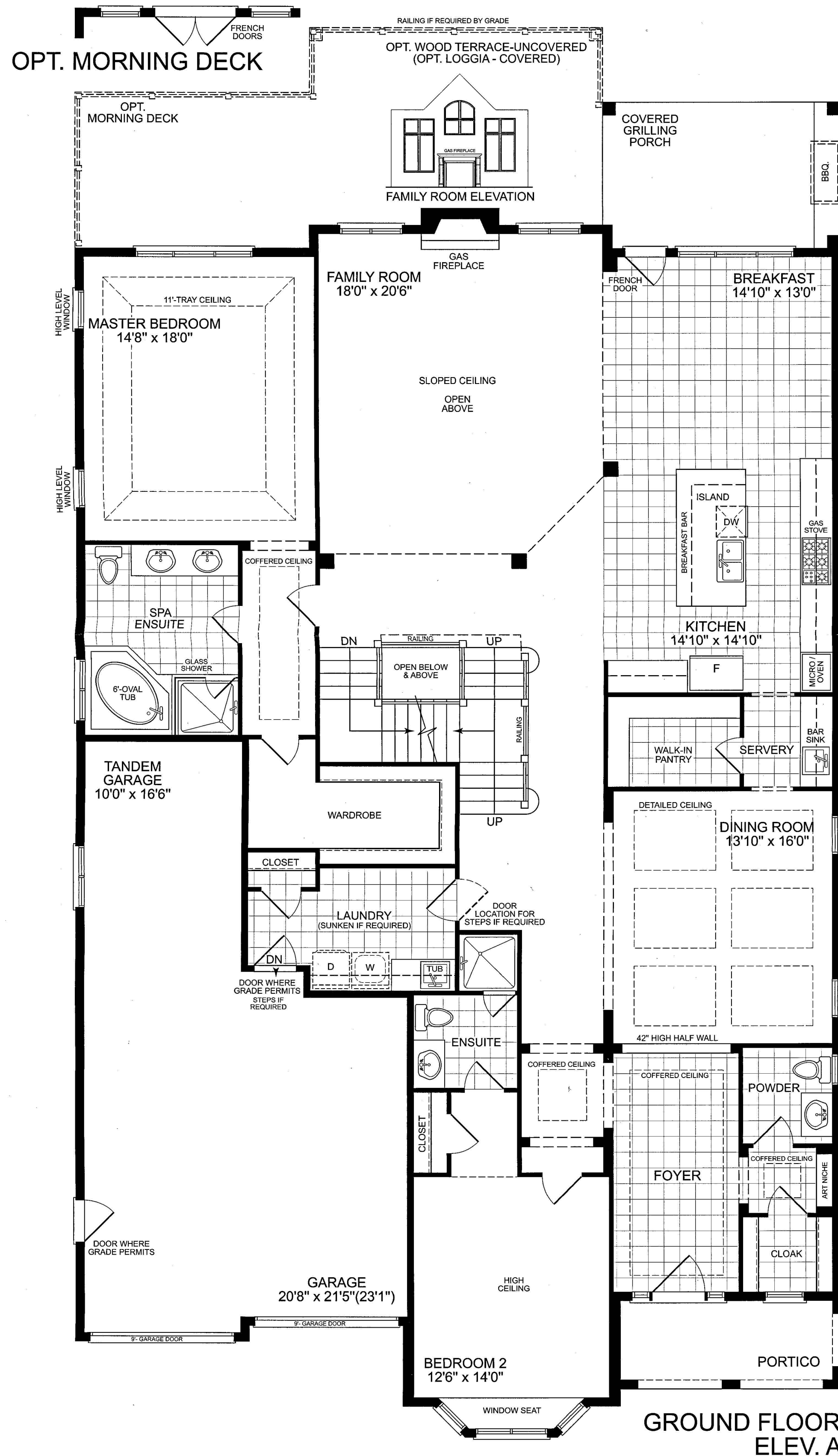
The Windsor



Elevation A 4,562 SQ.FT.
Includes 398 sq.ft. Open Space
Includes 109 sq.ft. Finished Lower Level area

Elevation B 4,564 SQ.FT.
Includes 398 sq.ft. Open Space
Includes 109 sq.ft. Finished Lower Level area

Elevation C 4,544 SQ.FT.
Includes 398 sq.ft. Open Space
Includes 109 sq.ft. Finished Lower Level area



Lavish Standard Home Features

- The bungalow design with a main floor master retreat is comfortable and spacious.
 - Generously large 9-ft garage doors for ease of parking and a roomy interior.
 - A stone portico, gracious 42" entrance door, with a granite or limestone foyer creates a warm and inviting space to greet guests.
 - Coffered and detailed ceilings throughout highlight gracious rooms and create a warm ambiance.
 - As the centre of every home, the kitchen is well-equipped with plenty of room to cook and entertain. It features an extra-large breakfast bar, breakfast room and access to the grilling porch through a french door.
 - The dining room features a detailed ceiling and is linked to the kitchen through a functional servity area with a bar sink and walk in pantry.
 - The stunning family room has over-height windows that allow the sunshine in and expose views of the expansive King City countryside.
 - A spacious second-floor loft features a media room, plus two additional bedrooms, fully equipped with private ensuite bathrooms for a quiet retreat from the rest of the home.
- Refined Options**
- Expand your outdoor living space, with an optional wood terrace, loggia, or optional morning deck.
 - Amaze friends with your exquisite wine collection, stored in a wine cellar with viewing window and glass door next to your dining room.