



Elevation A - 5,576 SQ.FT.

The Wimbledon

Elevation B - 5,589 SQ.FT.

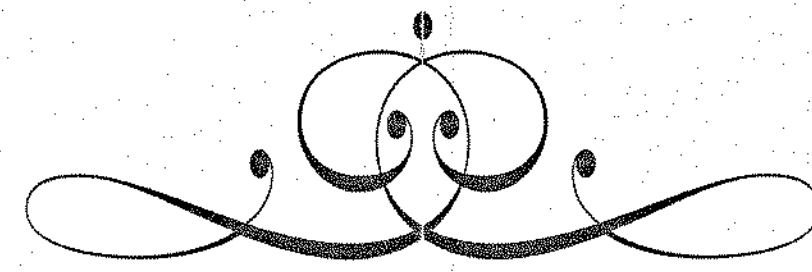


Elevation C - 5,589 SQ.FT.



kingstation.ca

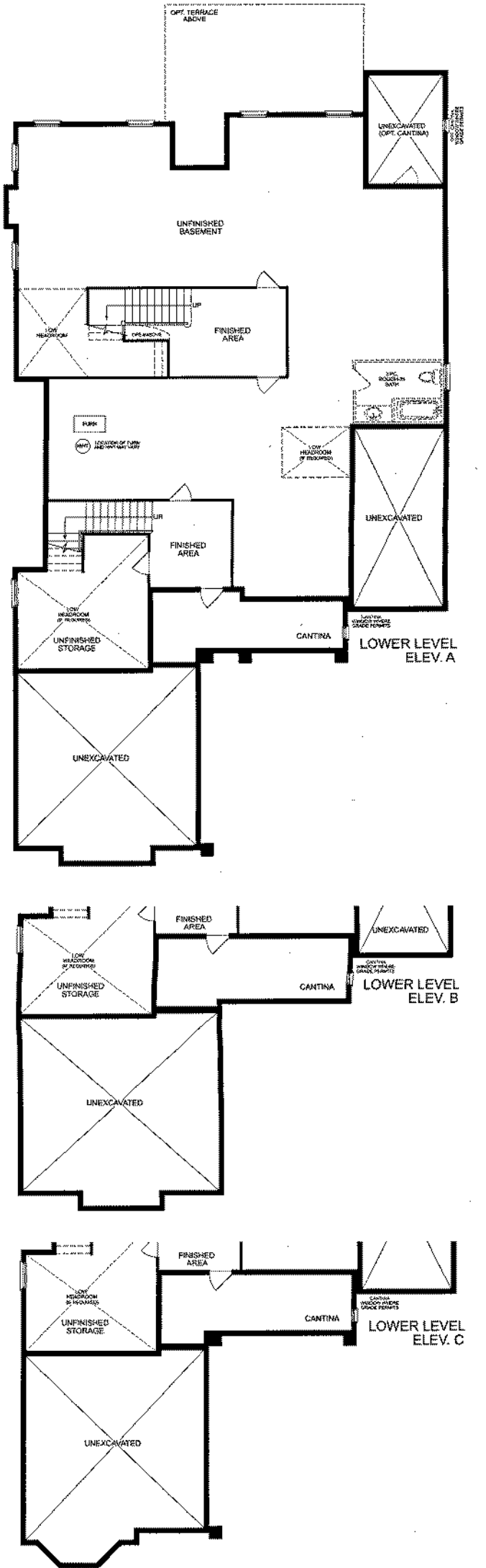
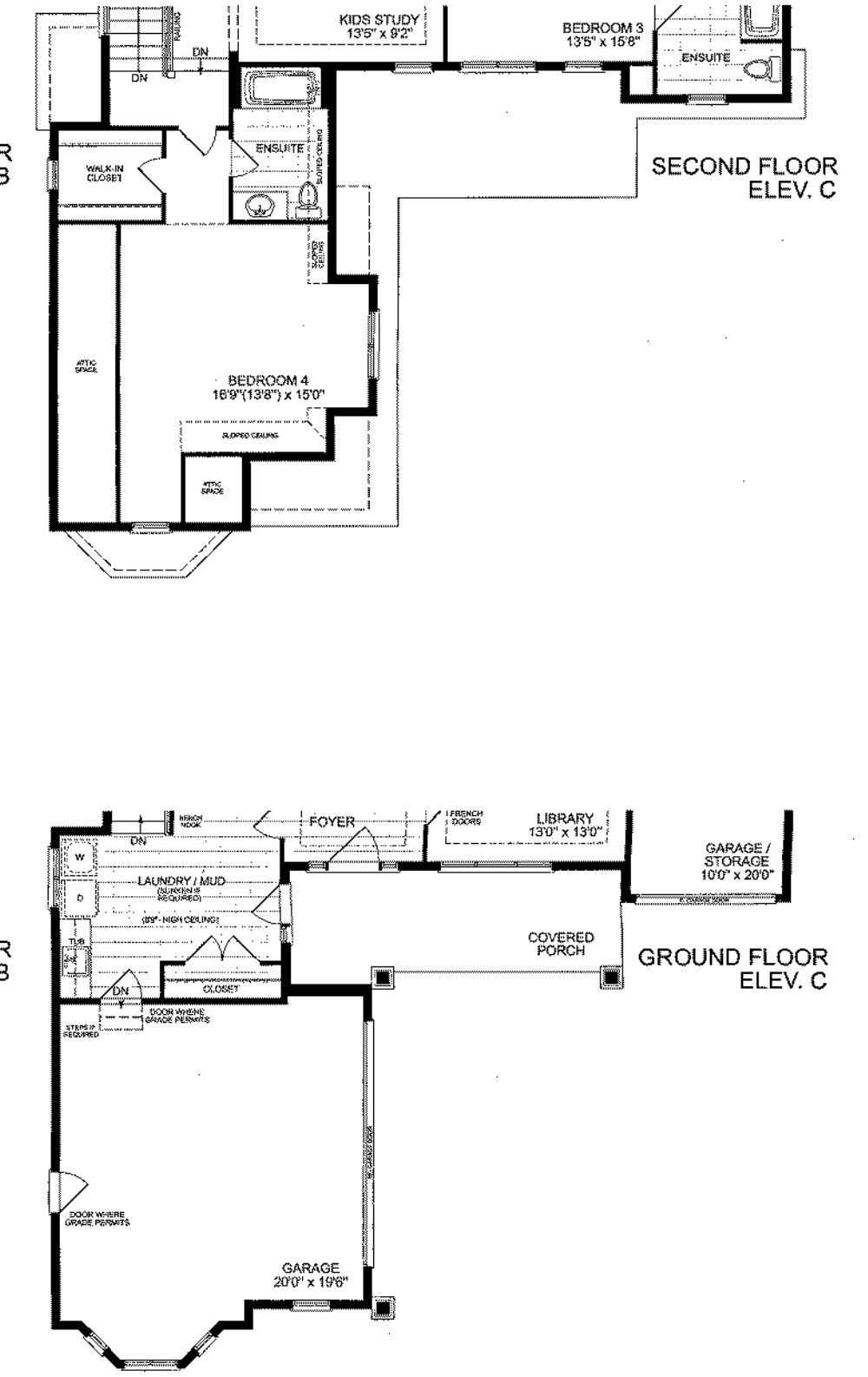
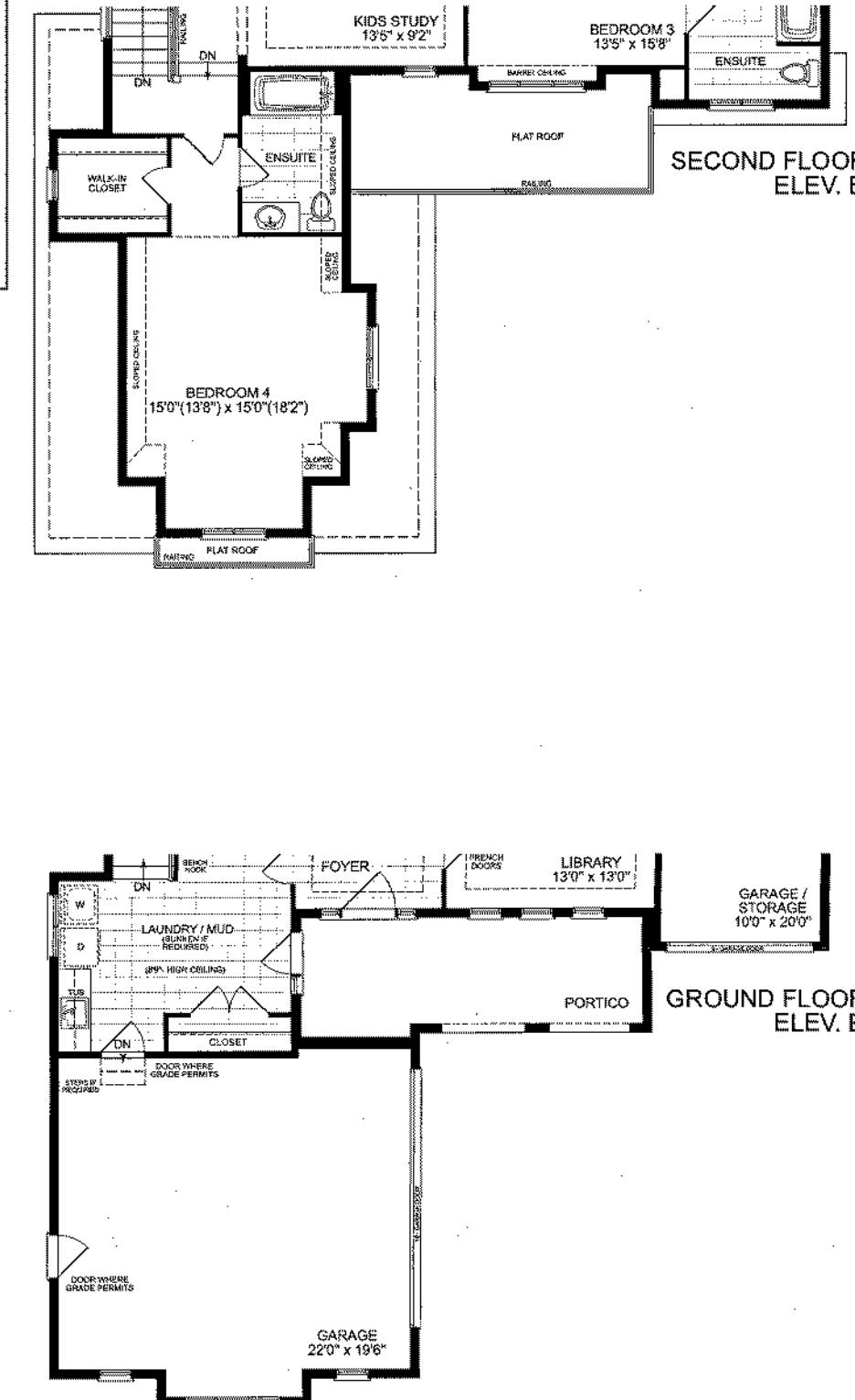
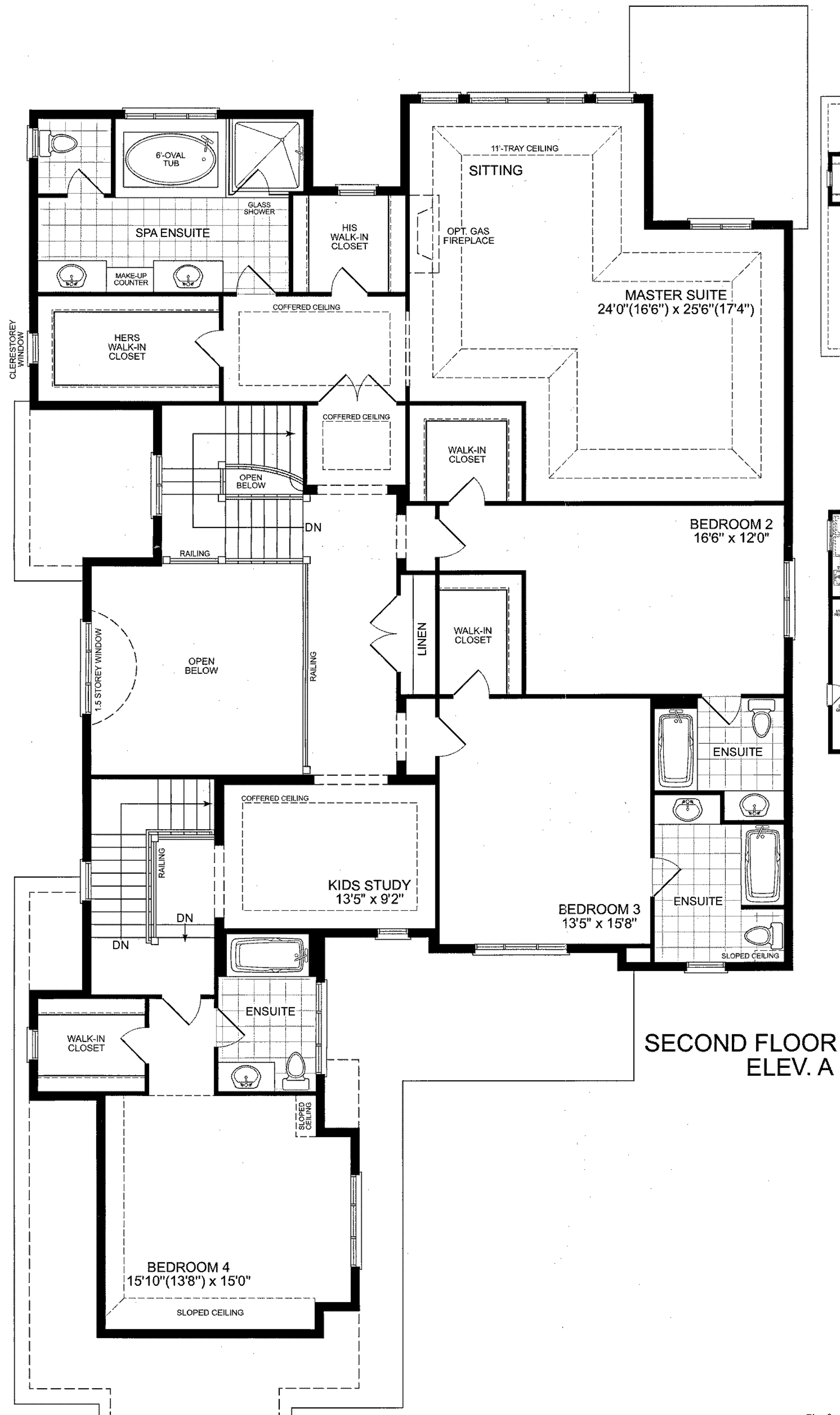
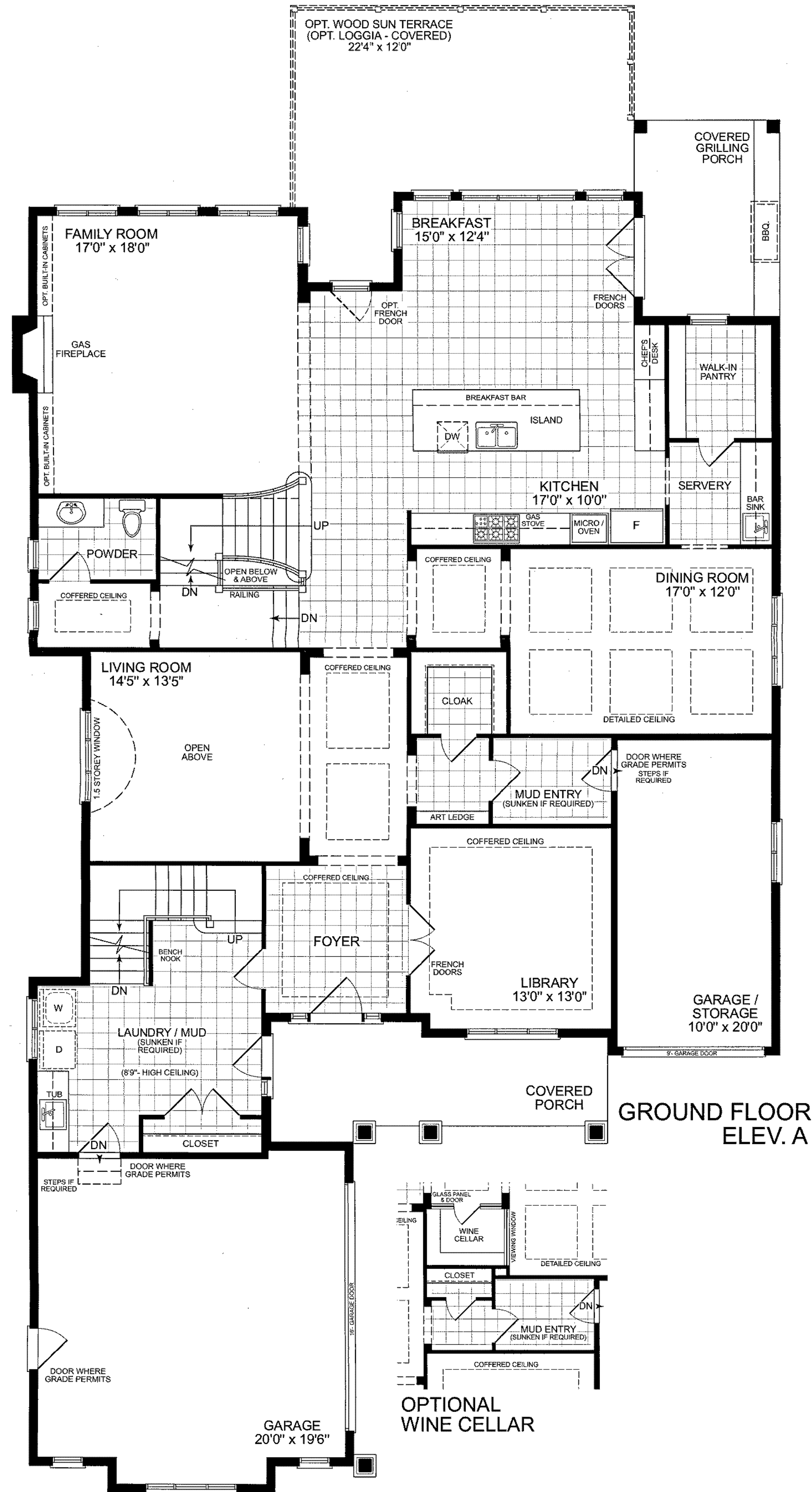
The Wimbledon



Elevation A 5,576 SQ.FT.
Includes 197 sq.ft. Open Space
Includes 147 sq.ft. Finished Lower Level area

Elevation B 5,589 SQ.FT.
Includes 197 sq.ft. Open Space
Includes 147 sq.ft. Finished Lower Level area

Elevation C 5,589 SQ.FT.
Includes 197 sq.ft. Open Space
Includes 147 sq.ft. Finished Lower Level area



Lavish Standard Home Features

- ❖ Plenty of garage parking for your vehicles and handy access to your home from two cleverly designed mud rooms that feature ample coat storage.
 - ❖ An elegant granite or limestone foyer is graced by a 42" extra-width door.
 - ❖ Living room ceiling is open to above, and a dramatic 1-1/2 storey window bathes the room in natural sunlight.
 - ❖ Layout is designed with consideration for family mealtime, with a dining room located adjacent to the kitchen and accessed through a servery, complete with walk in pantry and bar sink.
 - ❖ Enjoy cooking and dining in the open concept kitchen breakfast and family room with the warmth of a gas fireplace and the convenience of a chef's desk and double french doors leading to outdoor grilling porch.
 - ❖ With enough space for a private sitting room, there's a quiet place to read in the master retreat. It features plenty of windows, and dramatic 11-ft tray ceilings, his and hers walk in closets and a large and well-equipped spa ensuite.
 - ❖ 3 bedrooms have spacious walk in closets and fully private ensuite washrooms.
 - ❖ A spacious linen closet storage is perfect for home organization.
 - ❖ A kids' study or play room provides a great 'toy-friendly' zone.
 - ❖ An upper hall is open to below and plenty of light for beautiful views of the home.
- Refined Options**
- ❖ Expand your dining and living area outside. An optional sun terrace extends the covered grilling porch along the back of the home.
 - ❖ Dazzle your friends with your wine collection, with a wine cellar complete with a viewing window and glass door / panel.
 - ❖ Display art, books and other collections on the built in cabinets in the family room.