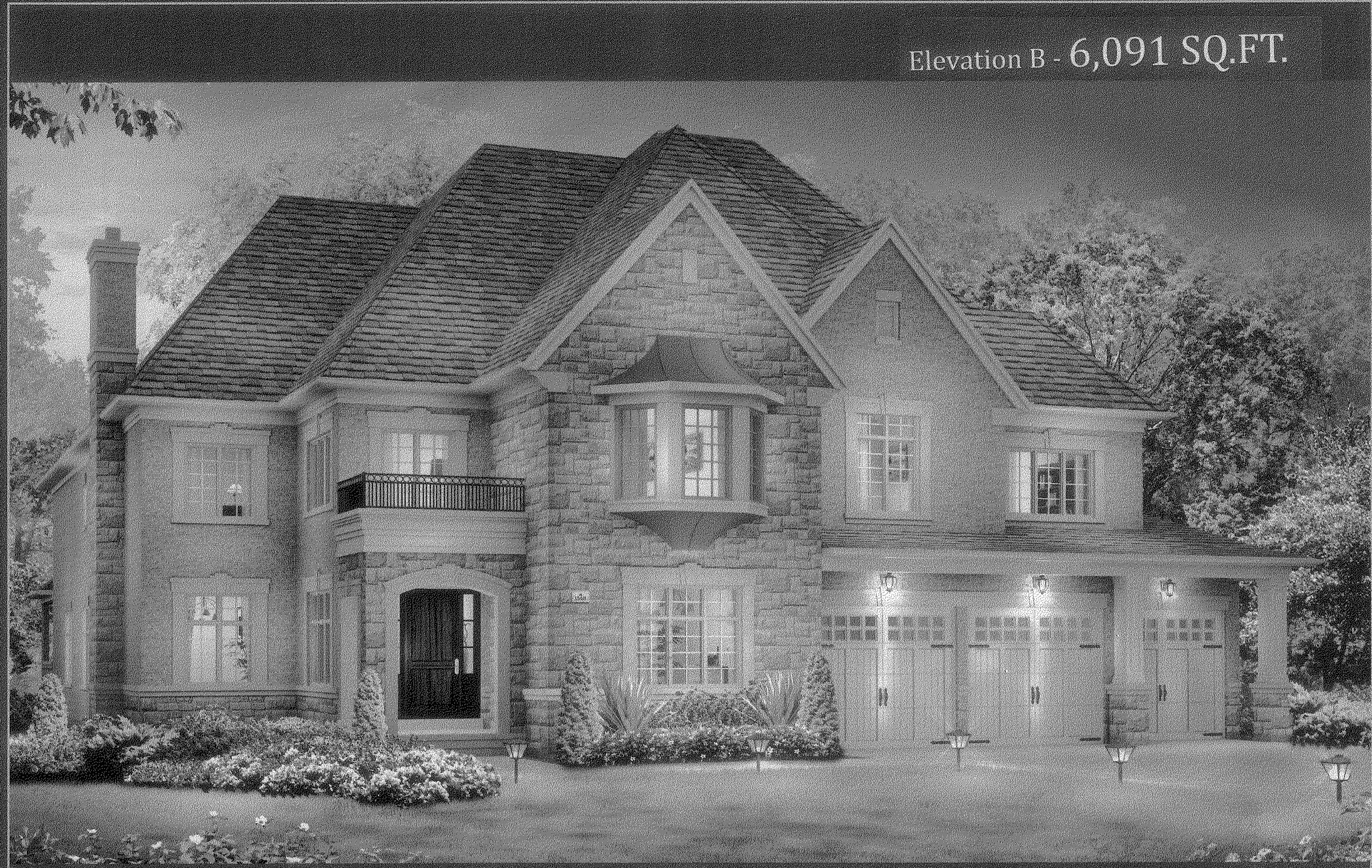


Elevation A - 6,055 SQ.FT.

The Millennium



Elevation B - 6,091 SQ.FT.



Elevation C - 6,120 SQ.FT.



kingstation.ca

# The Millennium

## Optional 5 Bedroom Layout

Elevation A 6,055 SQ.FT.  
Includes 567 sq.ft. Open Space  
Includes 127 sq.ft. Finished Lower Level area

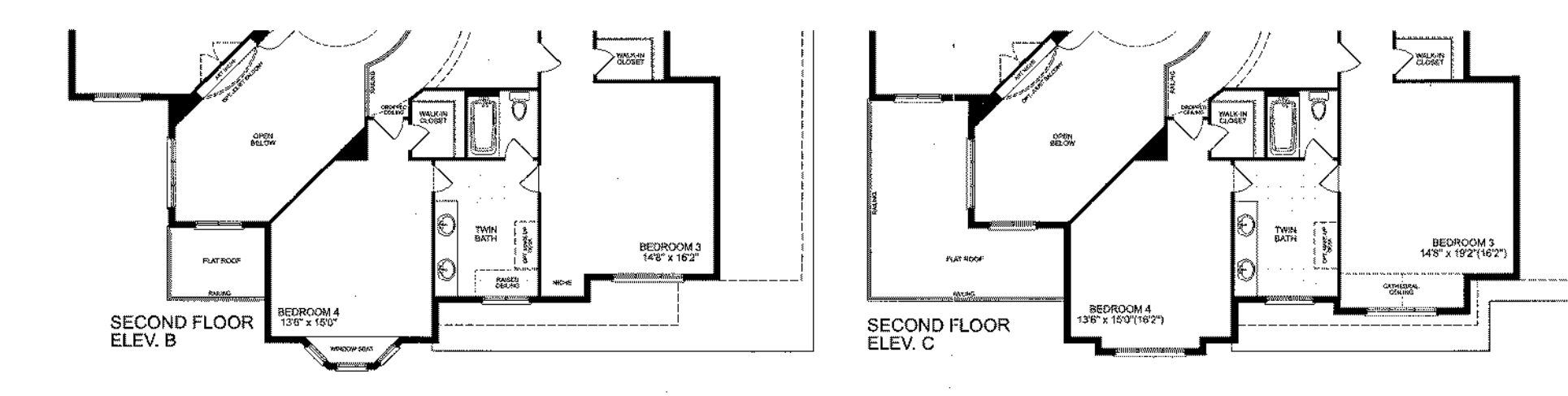
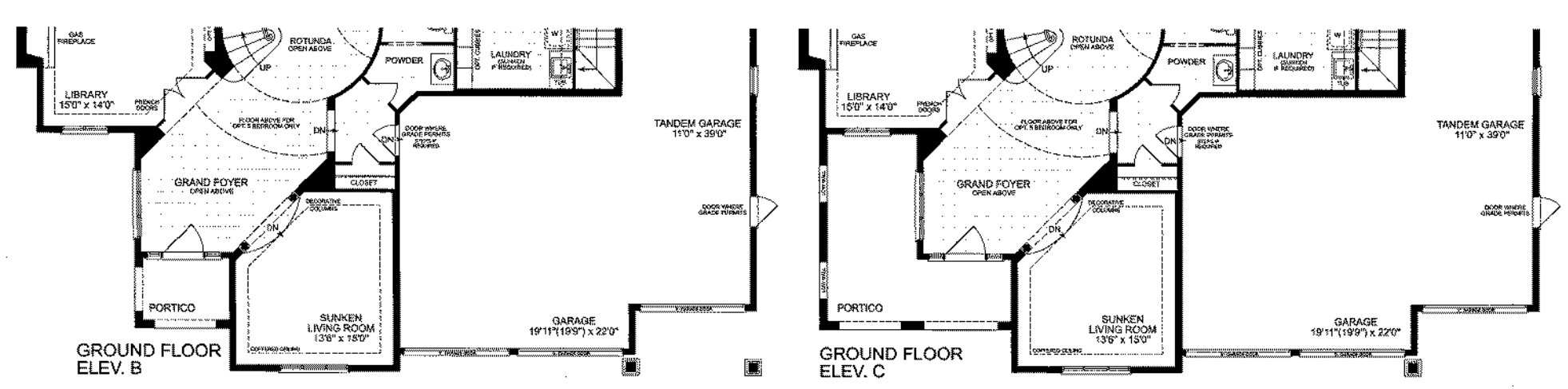
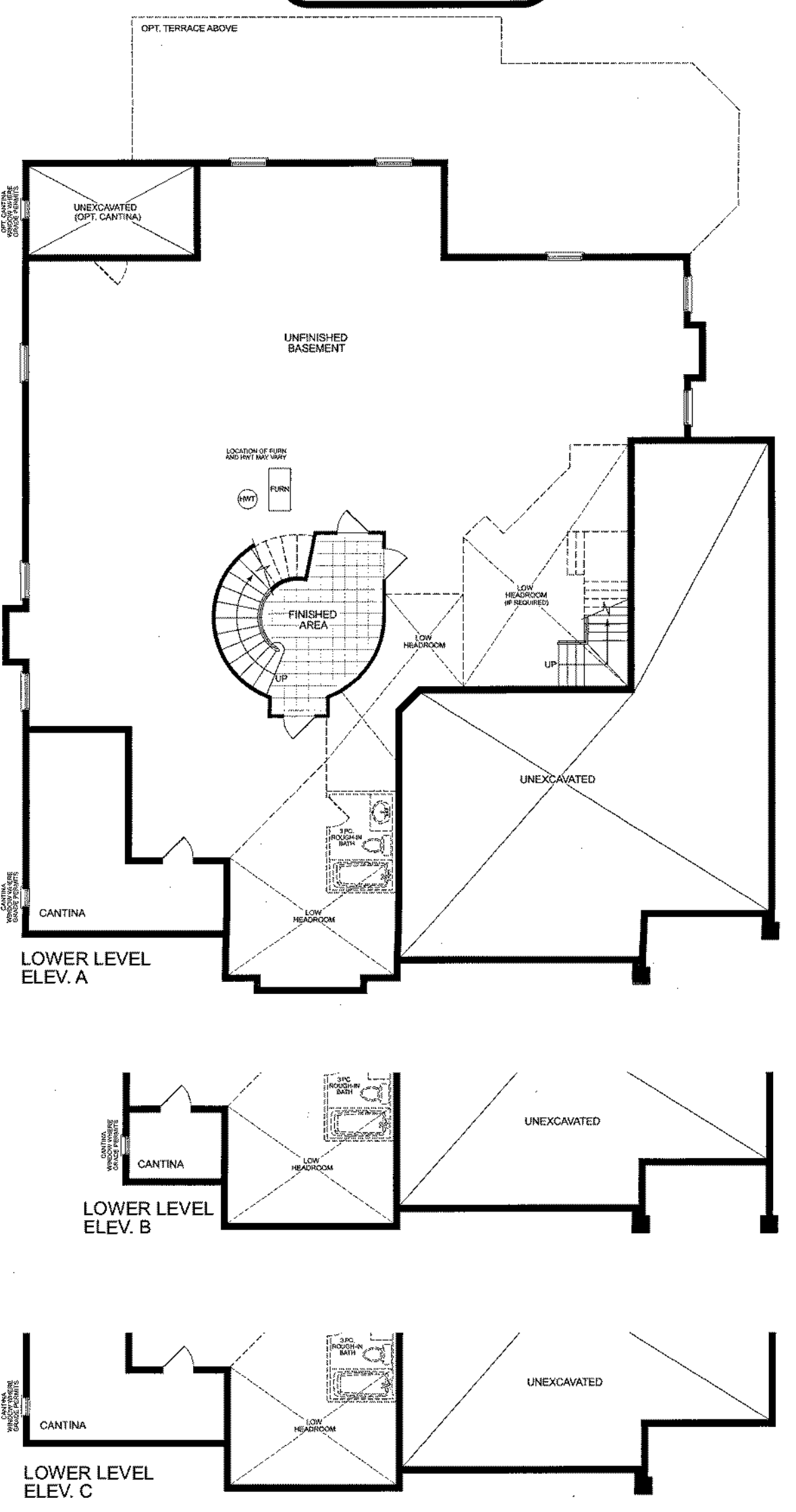
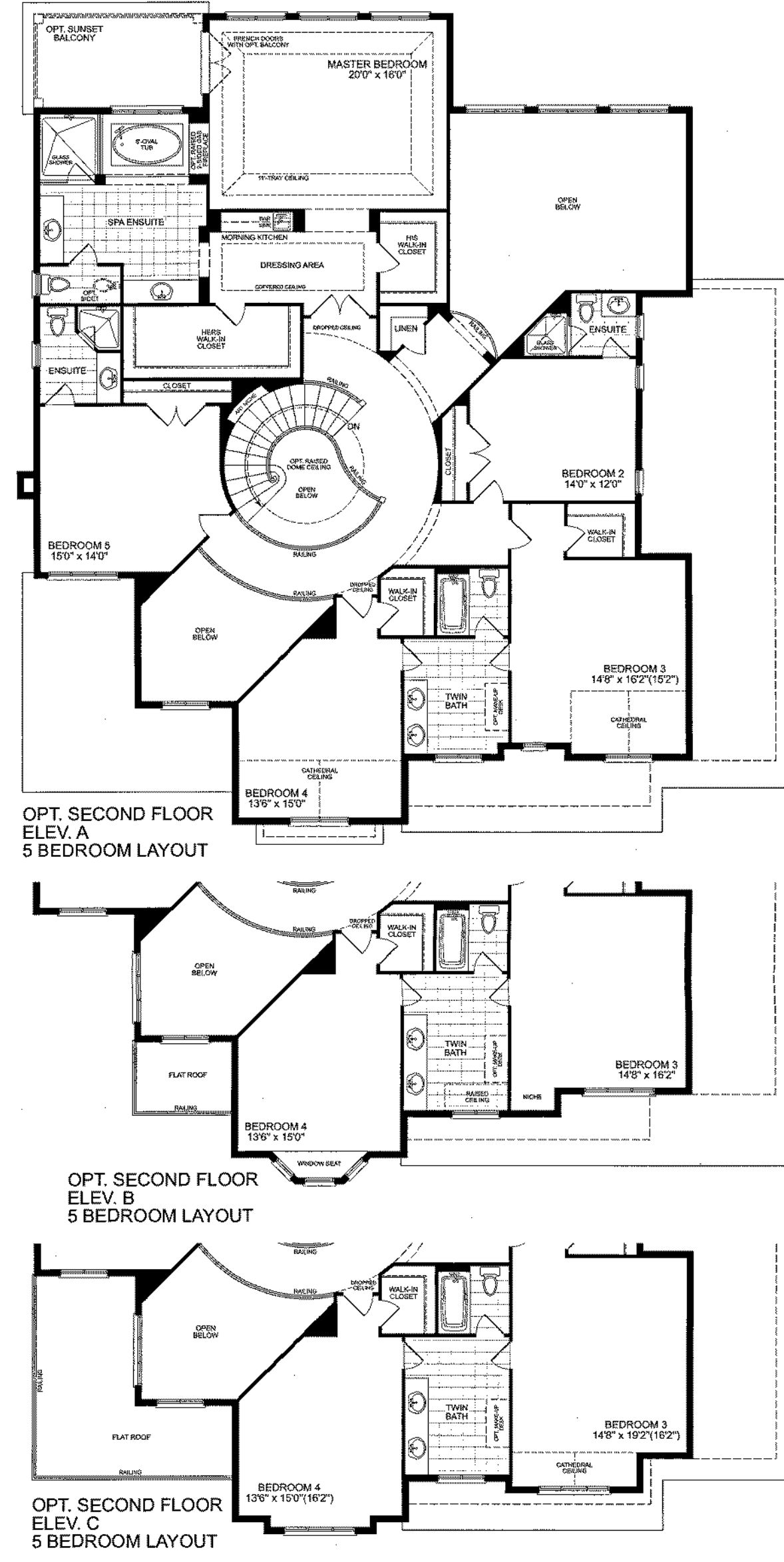
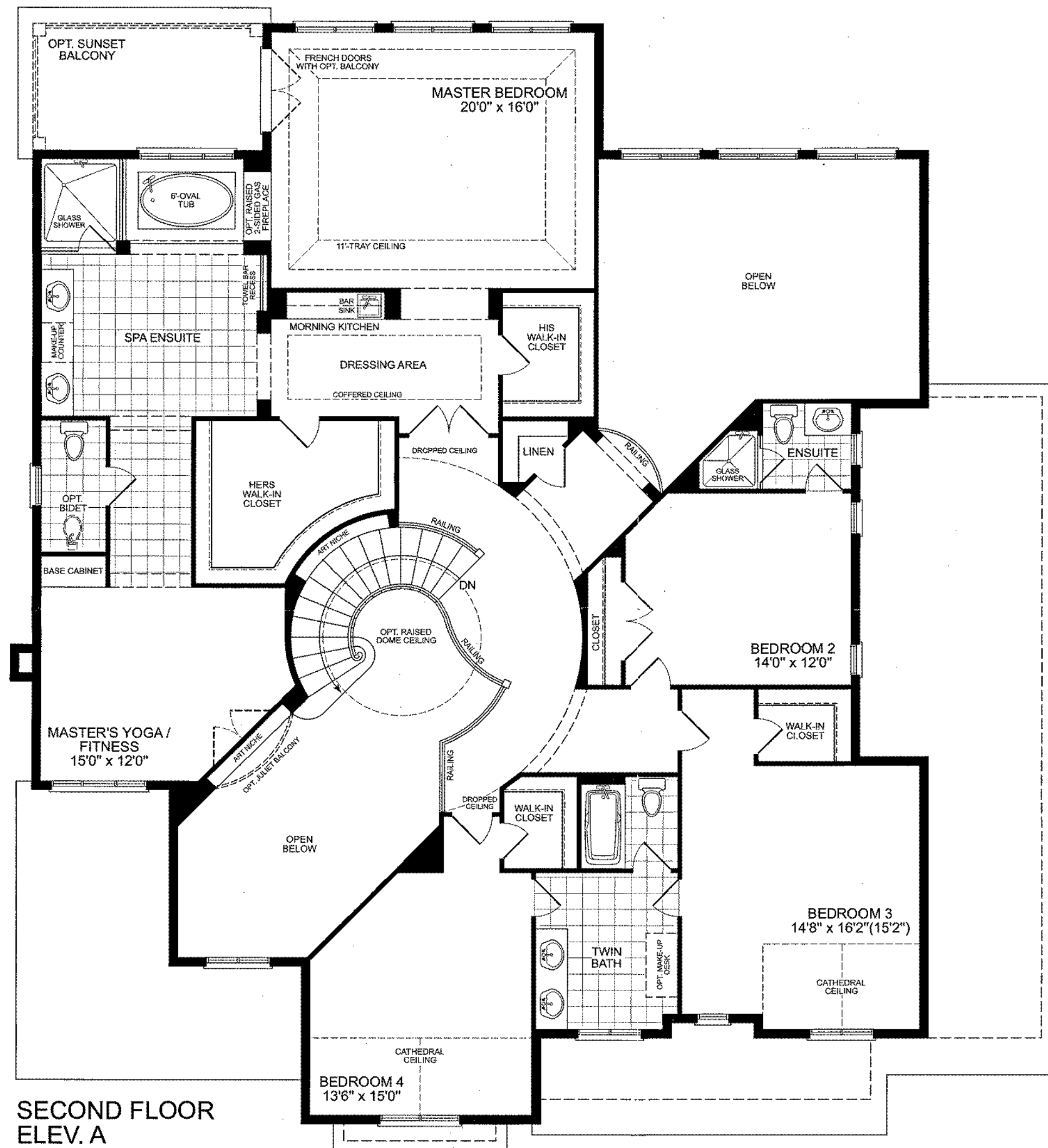
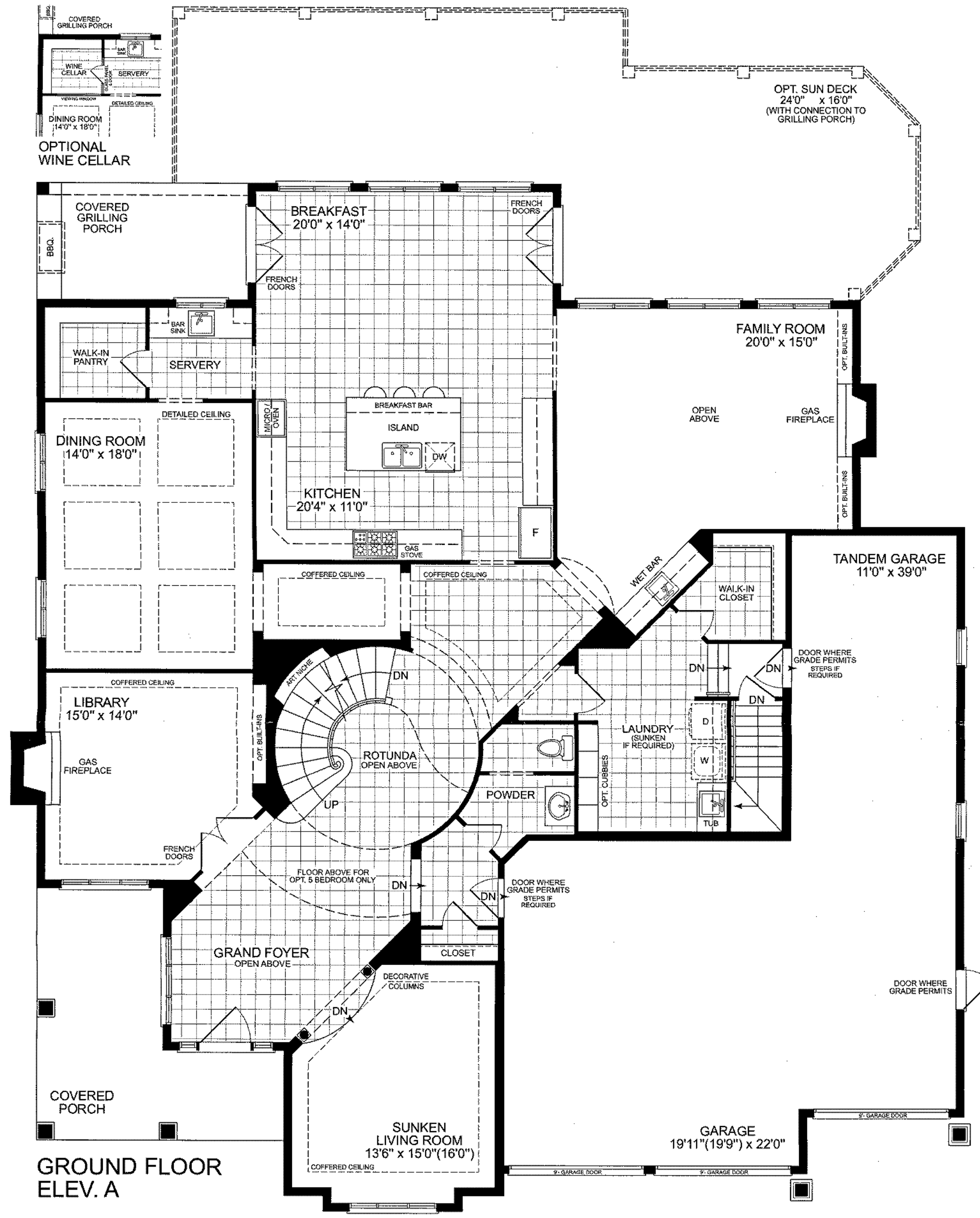
Elevation A 6,055 SQ.FT.  
Includes 516 sq.ft. Open Space  
Includes 127 sq.ft. Finished Lower Level area

Elevation B 6,091 SQ.FT.  
Includes 567 sq.ft. Open Space  
Includes 127 sq.ft. Finished Lower Level area

Elevation B 6,091 SQ.FT.  
Includes 516 sq.ft. Open Space  
Includes 127 sq.ft. Finished Lower Level area

Elevation C 6,120 SQ.FT.  
Includes 569 sq.ft. Open Space  
Includes 127 sq.ft. Finished Lower Level area

Elevation C 6,120 SQ.FT.  
Includes 519 sq.ft. Open Space  
Includes 127 sq.ft. Finished Lower Level area



### Lavish Standard Home Features

- A home design that lives up to its name, Millennium is high on drama and liveability, with garage parking for 4 cars, providing unparalleled convenience.
  - A unique corner porch and 42" entrance door leads to a grand foyer with large windows, high ceilings and reveals a spectacular rotunda.
  - Live in high style with rooms that reveal designer features throughout: coffered and detailed ceilings, art niches and feature windows.
  - With a kitchen that is highly functional and spacious, meal preparation is time to be enjoyed, entertaining is paramount in this home.
  - The dining room is conveniently adjoined to the kitchen through a servery with bar sink.
  - The family room has high ceilings and features a wet bar, perfect for the after dinner drink and quiet relaxation.
  - The upstairs rotundo features stunning views of the home with a dome ceiling, and railings overlooking the principal rooms below.
  - With a master retreat so sumptuous, you may never want to leave. It features an 11-ft tray ceiling, a morning kitchen, his and hers walk-in closets, and a master ensuite with a large soaker tub and glass shower, plus little extras, such as a recessed towel bar and make up table.
  - With a private Yoga / Fitness room it's easy to stay in shape, or take time for quiet meditation.
- Refined Options**
- There's always more room for luxury. An optional wine cellar is perfect for storing, collecting and enjoying your wine. It features an impressive viewing window and glass panel / door.
  - Both by the glow of firelight on a cold winter night, with an optional dual sided fireplace in the master retreat.

The floor plans and elevations shown are pre-construction and may be revised or improved as necessitated by architectural controls and the construction process. The measurements adhere to the rules and regulations of the TARION Warranty Corporation's official method for the calculation of floor area. Actual usable floor space may vary from the stated floor area. Front porch railing only required by O.B.C. All renderings are artist's concept. E. & O. E. JAN. 2012