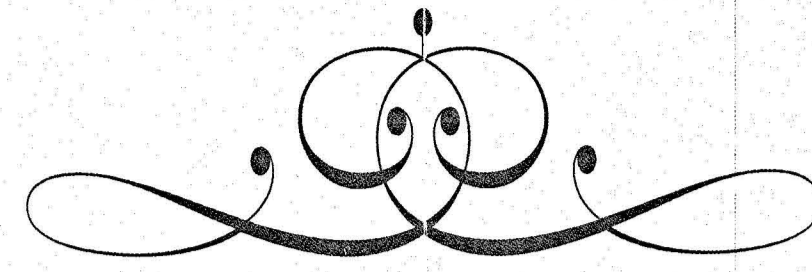


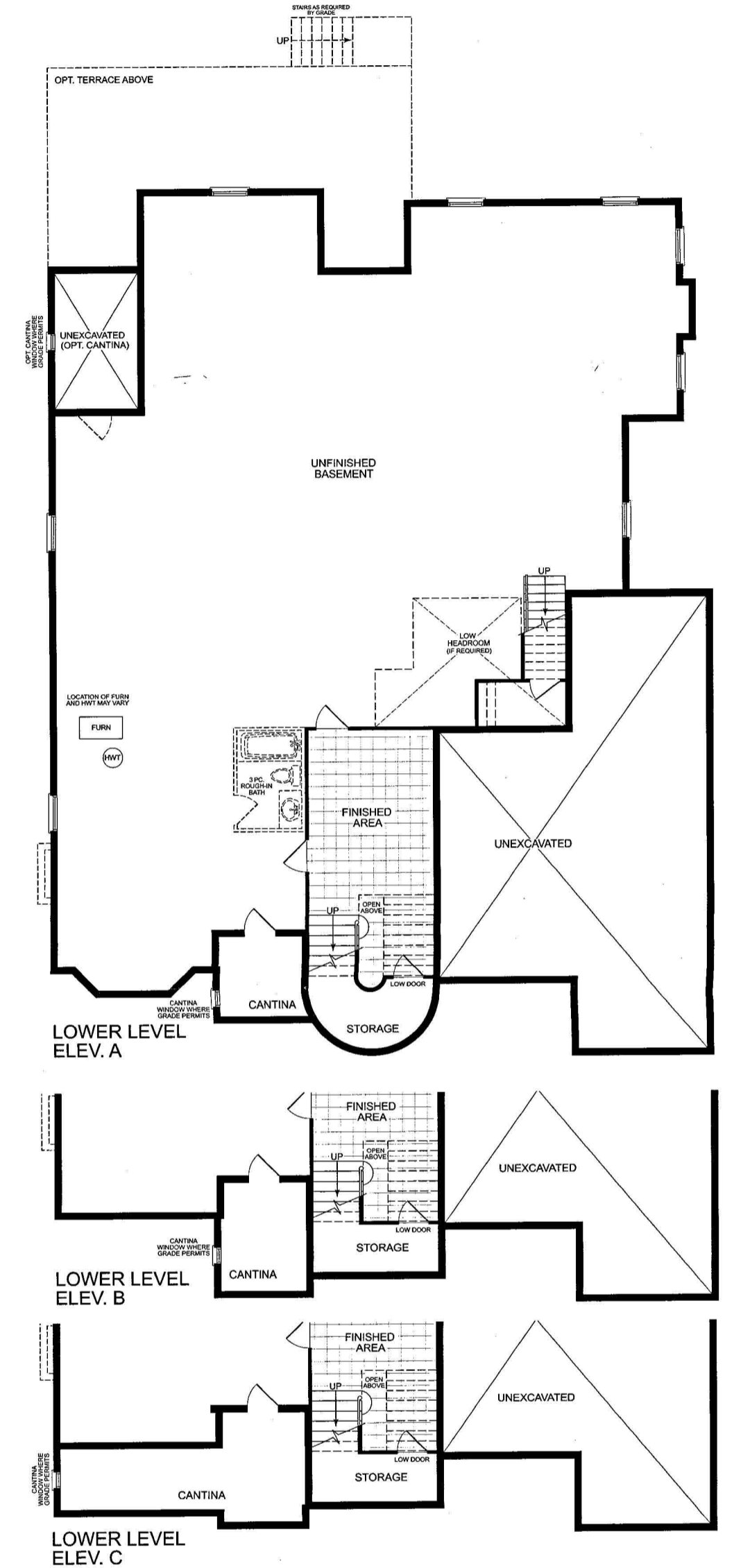
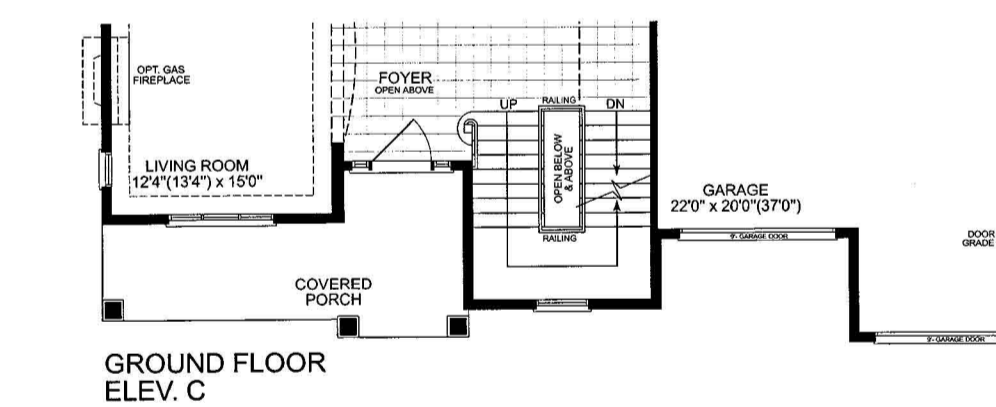
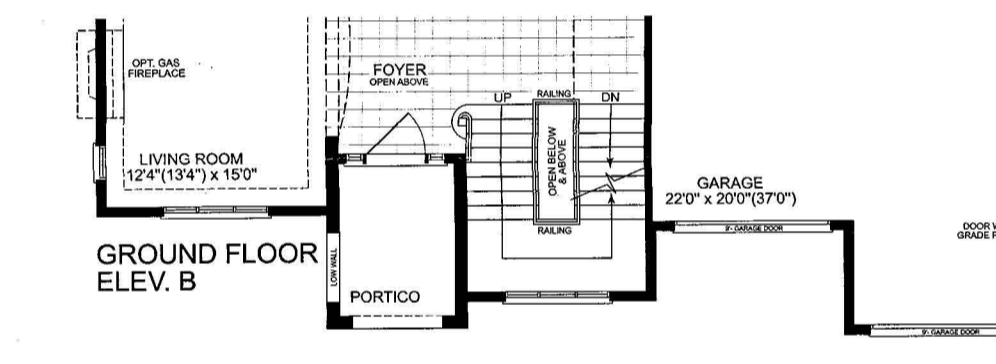
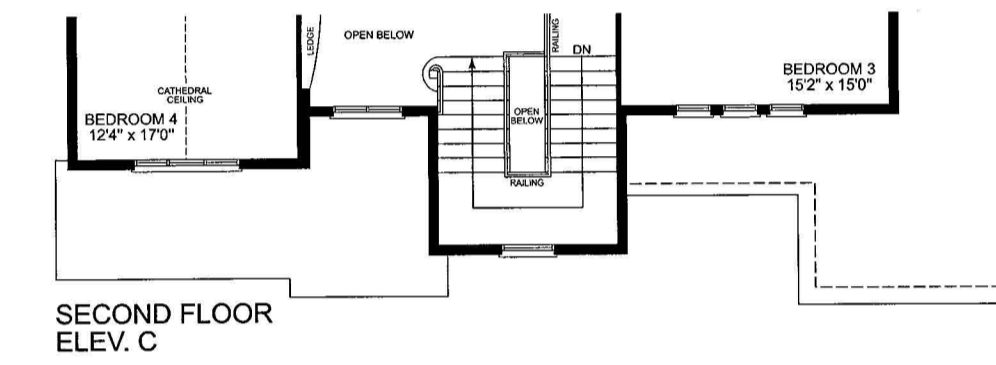
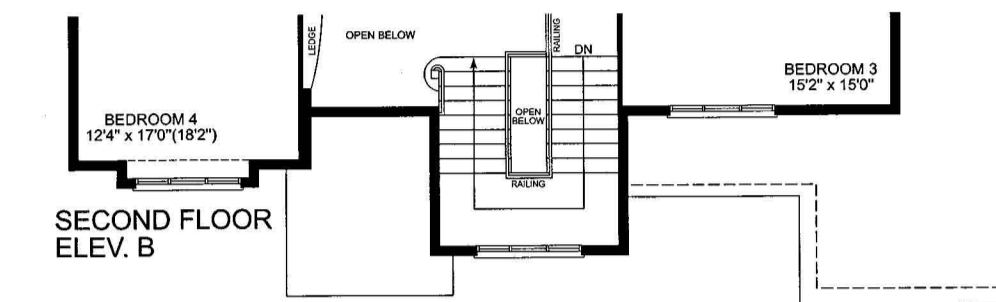
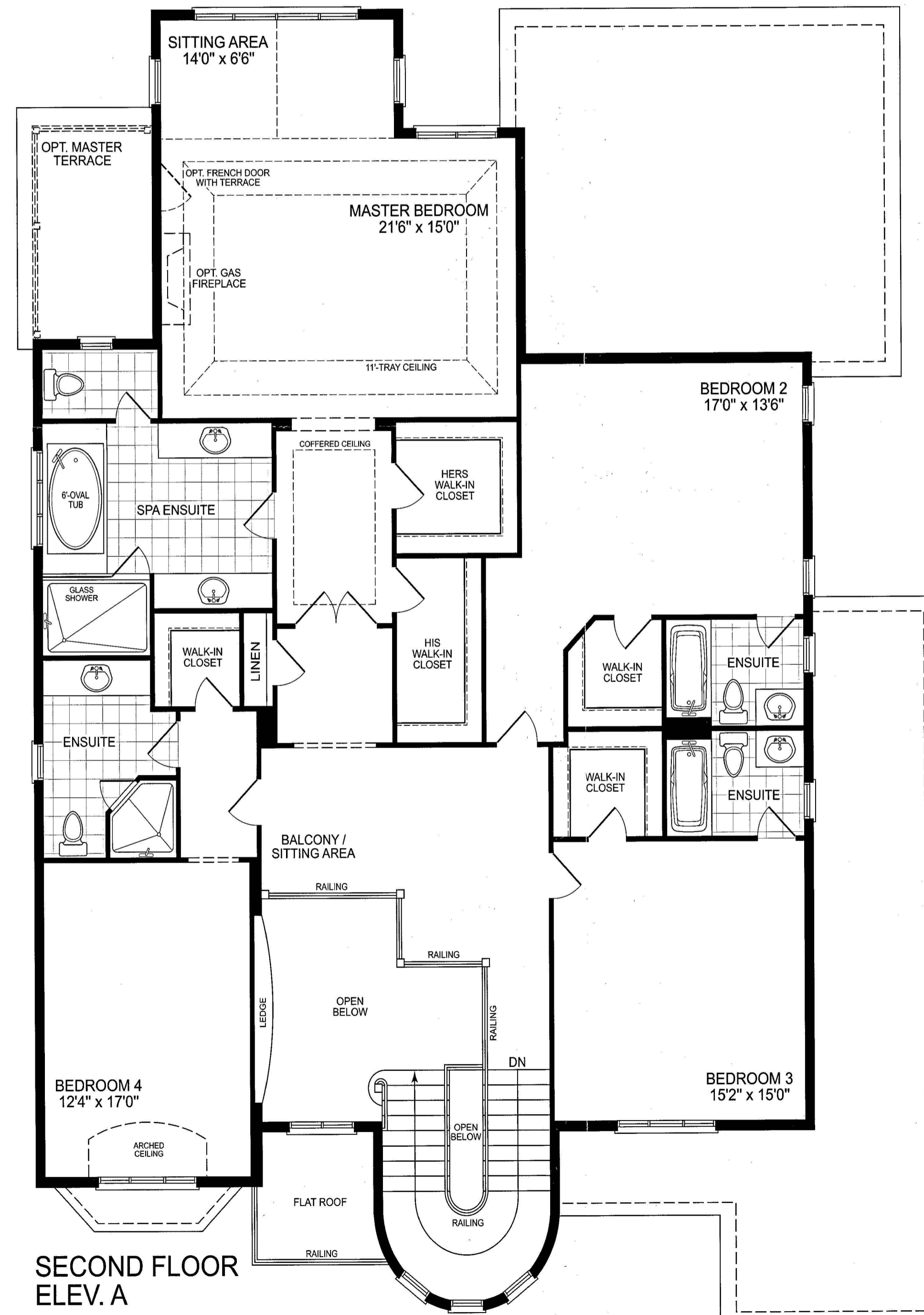
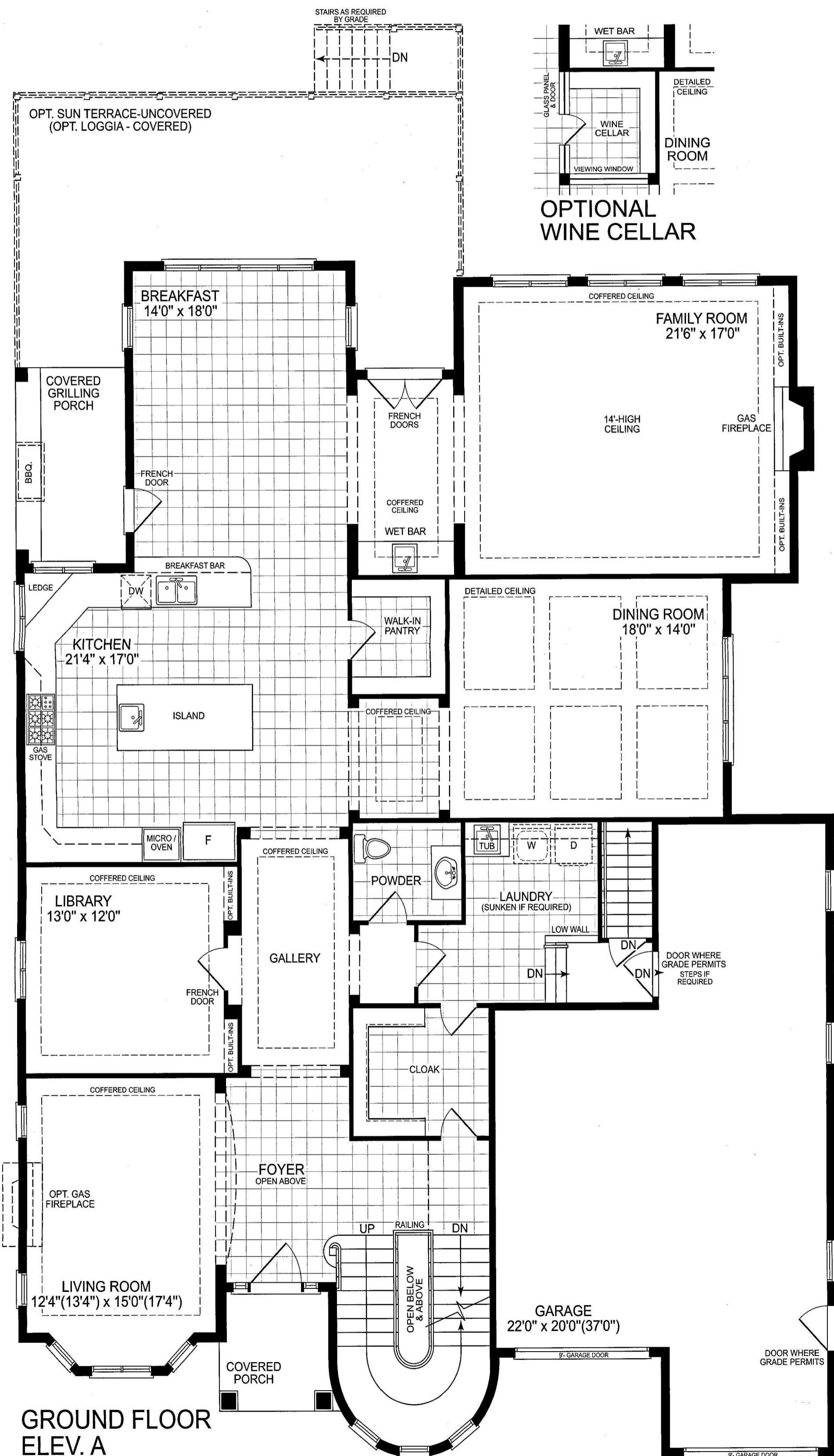
The Alexandria



Elevation A 5,506 SQ.FT.
Includes 152 sq.ft. Open Space
Includes 194 sq.ft. Finished Lower Level area

Elevation C 5,476 SQ.FT.
Includes 148 sq.ft. Open Space
Includes 194 sq.ft. Finished Lower Level area

Elevation B 5,485 SQ.FT.
Includes 148 sq.ft. Open Space
Includes 194 sq.ft. Finished Lower Level area



Lavish Standard Home Features

- Generously large 9-ft garage doors for ease of parking and a roomy interior.
 - A covered porch and 42" wide entrance door leads to grand granite or limestone open to above foyer, with sunlight streaming in from windows above the staircase landing.
 - Storage is never a problem with a large cloak room and mud room, which offer handy and functional space for daily life.
 - Entertain like never before with a layout perfect for dinner parties, a large formal dining room with generous windows, located next to a large, functional and beautifully designed kitchen.
 - With a family room set slightly away from the dining and cooking areas, and separated by a pass through with wet bar, retreat in privacy after a delicious meal.
 - Intimate family meals are perfect in a breakfast room that features large windows and french doors leading to a covered grilling porch.
 - Enjoy the beautiful views of the home from the second floor balcony / sitting area, which is open to below.
 - 3 bedrooms feature private ensuite washrooms and walk in closets.
 - Reflect on the day in a spacious master bedroom with a sitting area surrounded by windows, or from the large soaker tub in the master ensuite.
- Refined Options**
- Select a fine vintage to accompany your meal from an optional wine cellar with viewing window and glass door / panel.
 - French doors lead from the breakfast / family area directly to a large optional sun terrace or loggia.
 - Wake up with the sun on the terrace in the master retreat.